

# **ABBYY® PDF Transformer+**

## System Administrator's Guide

Information in this document is subject to change without notice and does not bear any commitment on the part of ABBYY.

The software described in this document is supplied under a license agreement. The software may only be used or copied in strict accordance with the terms of the agreement. No part of this document may be reproduced or transmitted in any form or by any means, electronic or other, for any purpose, without the express written permission of ABBYY.

© 2013 ABBYY Production LLC. All rights reserved.

ABBYY, the ABBYY logo, and ADRT are either registered trademarks or trademarks of ABBYY Software Ltd.

Adobe PDF Library licensed from Adobe Systems Incorporated. © 1987-2012 Adobe Systems Incorporated. All rights reserved.

Adobe, Acrobat, the Adobe logo, the Acrobat logo, the Adobe PDF logo, and Adobe PDF Library are either registered trademarks or trademarks of Adobe Systems Incorporated in the United States and/or other countries.

© 2001 ParaType, Inc.

PDF-XChange Standard © 2001-2013 by Tracker Software Products (Canada) Ltd.

JasPer License Version 2.0:

© 2001-2006 Michael David Adams

© 1999-2000 Image Power, Inc.

© 1999-2000 The University of British Columbia

© 1991-2013 Unicode, Inc. All rights reserved.

© 2012 Microsoft Corporation. All rights reserved.

Microsoft, Outlook, Excel, PowerPoint, Visio, Windows Vista, and Windows are either registered trademarks or trademarks of Microsoft Corporation in the United States and/or other countries.

Kakadu Software © 2013 University of New South Wales. All rights reserved.

EPUB is a registered trademark of the IDPF (International Digital Publishing Forum).

This product includes software developed by the OpenSSL Project for use in the OpenSSL Toolkit.

(<http://www.openssl.org/>). This product includes cryptographic software written by Eric Young (eay@cryptsoft.com).

© 1998-2011 The OpenSSL Project. All rights reserved.

© 1995-1998 Eric Young (eay@cryptsoft.com) All rights reserved.

This product includes software written by Tim Hudson (tjh@cryptsoft.com).

All other trademarks are the sole property of their respective owners.

# Table of Contents

<b>INSTALLING ABBYY PDF TRANSFORMER+ ON WORKSTATIONS .....</b>	<b>3</b>
<b>Creating a multi-user administrative installation point.....</b>	<b>3</b>
<b>Interactive installation .....</b>	<b>3</b>
<b>Command line installation .....</b>	<b>4</b>
<b>Using Active Directory.....</b>	<b>6</b>
<b>Using Microsoft System Center Configuration Manager (SCCM).....</b>	<b>10</b>
<b>INSTALLING ABBYY PDF TRANSFORMER+ ON A TERMINAL SERVER .....</b>	<b>15</b>
<b>Administrative installation.....</b>	<b>15</b>
<b>Setting Up Windows RemoteApp .....</b>	<b>17</b>
<b>Setting Up Citrix XenApp .....</b>	<b>18</b>
<b>ACTIVATING ABBYY PDF TRANSFORMER+ .....</b>	<b>22</b>
<b>Why is activation necessary? .....</b>	<b>22</b>
<b>Activating the product .....</b>	<b>22</b>
<b>Activation methods .....</b>	<b>22</b>
<b>Automatic activation .....</b>	<b>23</b>
<b>Renewing a license .....</b>	<b>23</b>
<b>FREQUENTLY ASKED QUESTIONS .....</b>	<b>24</b>
<b>Can I clone an operating system with pre-installed ABBYY PDF Transformer+? .....</b>	<b>24</b>
<b>How can I repair ABBYY PDF Transformer+ on workstations? .....</b>	<b>24</b>
<b>How can I delete an expired license from a workstation? .....</b>	<b>24</b>
<b>How can I change the network connection settings?.....</b>	<b>24</b>
<b>How can I rename the computer hosting the License Server or move the License Server to another computer?.....</b>	<b>25</b>
<b>TECHNICAL SUPPORT .....</b>	<b>27</b>

# Installing ABBYY PDF Transformer+ on Workstations

You can install ABBYY PDF Transformer+ either directly from the CD-ROM or from a network share (in the latter case, you must copy the entire distribution package onto the file server).

You can use one of the following methods to install ABBYY PDF Transformer+ on the workstations:

- manually in interactive mode
- via the command line
- Active Directory
- Microsoft System Center Configuration Manager (SCCM)

## Workstation requirements

1. 1-GHz or faster 32-bit (x86) or 64-bit (x64) CPU
2. Operating System: Microsoft® Windows® 8, Microsoft® Windows® 8.1, Microsoft Windows 7, Microsoft Windows Vista, Microsoft Windows Server 2012, Microsoft Windows Server 2012 R2, Microsoft Windows Server 2008, Microsoft Windows Server 2008 R2, Microsoft Windows Server 2003, Microsoft Windows Server 2003 R2 or Microsoft Windows XP (to work with localized interfaces, the operating system must support the corresponding language)
3. Memory: 1024 MB RAM; in multiprocessor systems, an additional 512 MB of RAM is required for each additional processor
4. 800 MB for installation of all program components; 800 MB for program operation
5. Video card and monitor (min. resolution 1024×768)
6. Keyboard, mouse or other pointing device

**Note:** To be able to create PDF documents from Microsoft Word, Microsoft Excel, Microsoft PowerPoint, and Microsoft Visio documents, you must have the corresponding Microsoft Office applications installed on your computer.

## Creating a multi-user administrative installation point

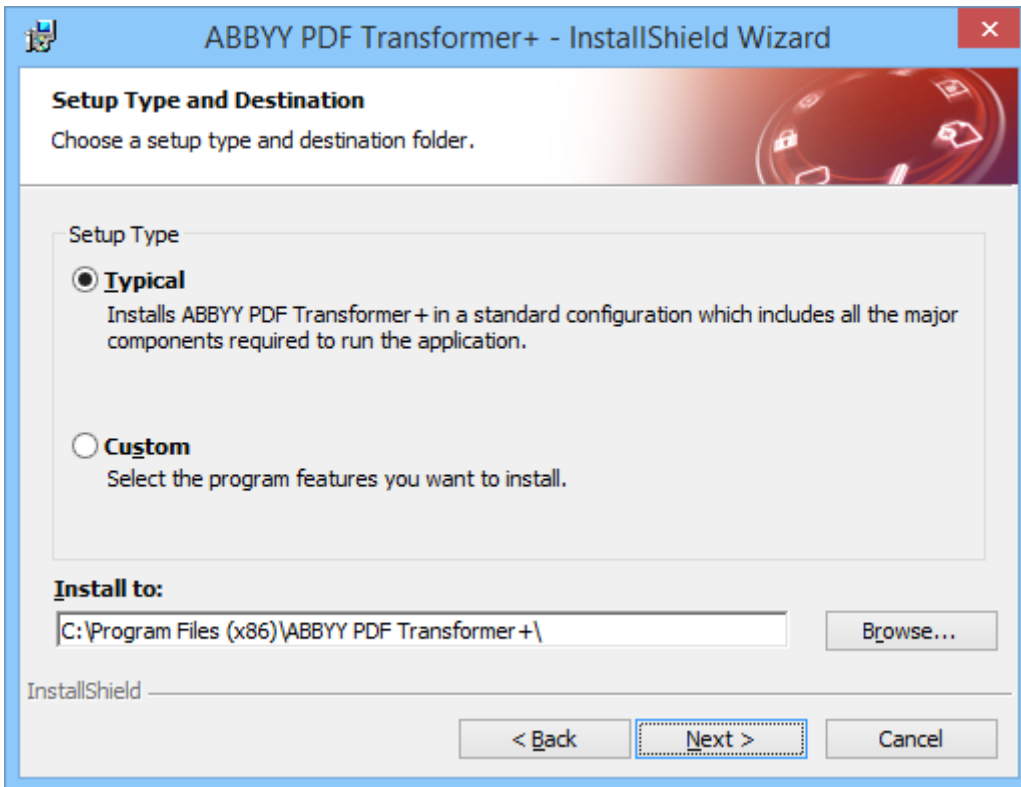
1. Run the **AutoRun.exe** file on the CD-ROM or in the folder where you copied the distribution package.
2. Click **Deploy ABBYY PDF Transformer+ in LAN**.
3. Follow the instructions of the setup wizard.

An administrative installation point will be created that will include a multi-user activation key\* (distribution package). When installing ABBYY PDF Transformer+ from this installation point, the license will be activated automatically.

\* A multi-user activation key is a file required for automatic activation of the license on workstations. Automatic activation does not require any user involvement when installing the program on workstations.

## Interactive installation

1. Run the **setup.exe** file in the folder that contains the distribution files.



2. Follow the instructions of the setup wizard.

## Command line installation

Run the **setup.exe** file in the folder that contains the distribution files, using the parameters described below:

### Advertise installation

For advertise installation, type

#### **Setup.exe /j**

The program icon will appear in the workstation's **Start** menu. Clicking this icon automatically installs the program in default configuration (the interface language is selected automatically based on the regional settings of the computer).

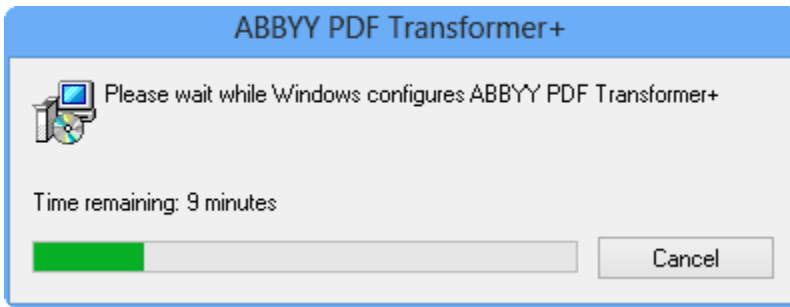
### Silent installation

For silent installation, type

#### **Setup.exe /qn**

In the case of silent installation, no set-up dialog boxes are displayed and the program is installed in default configuration (the interface language is selected automatically based on the regional settings of the computer).

**Note:** Change **"/qn"** to **"/qb"** if you want an installation progress bar to be displayed. No other dialog boxes will be displayed.



## Additional command-line options for silent installation

`/L<language code>` disables automatic selection of the interface language and installs ABBYY PDF Transformer+ with the interface language specified in the command line.

Possible **language code\*** values:

- 1028 Chinese (Traditional)
- 1029 Czech
- 1031 German
- 1032 Greek
- 1033 English
- 1034 Spanish
- 1036 French
- 1038 Hungarian
- 1040 Italian
- 1042 Korean
- 1043 Dutch
- 1045 Polish
- 1046 Portuguese (Brazilian)
- 1049 Russian
- 1055 Turkish
- 2052 Chinese (Simplified)

\*The number of available interface languages depends on the type of your distribution package.

`/V"<command line>"` passes the specified command line directly to **msiexec.exe**. Instead of the words "command line" you can specify the following:

`INSTALLDIR=<destination path>` specifies the path to the folder where ABBYY PDF Transformer+ will be installed.

`WEB_ALLOWED=<Yes or No>` allows or prohibits sending information about the selected ABBYY PDF Transformer+ settings to ABBYY over the Internet.

`CB_PDF_DEFAULT=<Yes or No>` allows or prohibits using ABBYY PDF Transformer+ as the default PDF viewer.

`CHECK_UPDATES=<Yes or No>` allows or prohibits checking for updates.

`SHCTDESKTOP=<Yes or No>` allows or prohibits creating ABBYY PDF Transformer+ icon on the desktop.

`INTEGRATION=<Yes or No>` allows or prohibits integrating ABBYY PDF Transformer+ with Microsoft Office applications and Windows Explorer.

`MSWORD_INTEGRATION=<Yes or No>` allows or prohibits integrating ABBYY PDF Transformer+ with Microsoft Word.

`MSOUTLOOK_INTEGRATION=<Yes or No>` allows or prohibits integrating ABBYY PDF Transformer+ with Microsoft Outlook.

`MSEXCEL_INTEGRATION=<Yes or No>` allows or prohibits integrating ABBYY PDF Transformer+ with Microsoft Excel.

PPOINT\_INTEGRATION=<Yes or No> allows or prohibits integrating ABBYY PDF Transformer+ with Microsoft PowerPoint.

VISIO\_INTEGRATION=<Yes or No> allows or prohibits integrating ABBYY PDF Transformer+ with Microsoft Visio.

EXPLORER\_INTEGRATION=<Yes or No> allows or prohibits integrating ABBYY PDF Transformer+ with Windows Explorer.

E.g.:

**Setup.exe /qn /L1049 /v INSTALLDIR="C:\ABBYY PDF Transformer+"  
WEB\_ALLOWED=Yes**

This will install ABBYY PDF Transformer+ into C:\ABBYY PDF Transformer+. The menus, dialog boxes and other interface elements will be in Russian. Information about the selected ABBYY PDF Transformer+ settings will be sent to ABBYY over the Internet. The set of available OCR languages depends on the type of the distribution package.

## Using Active Directory

In the Microsoft Windows Server family of operating systems there is an integrated directory service, **Active Directory**, which, in turn, includes **Group Policy**. The Software Installation snap-in, which is part of Group Policy, allows you to install a software application on several workstations simultaneously.

Three major installation methods are implemented in **Active Directory**:

- Publish to User
- Assign to User
- Assign to Computer

ABBYY PDF Transformer+ can be installed using the **Assign to Computer** method.

### Important!

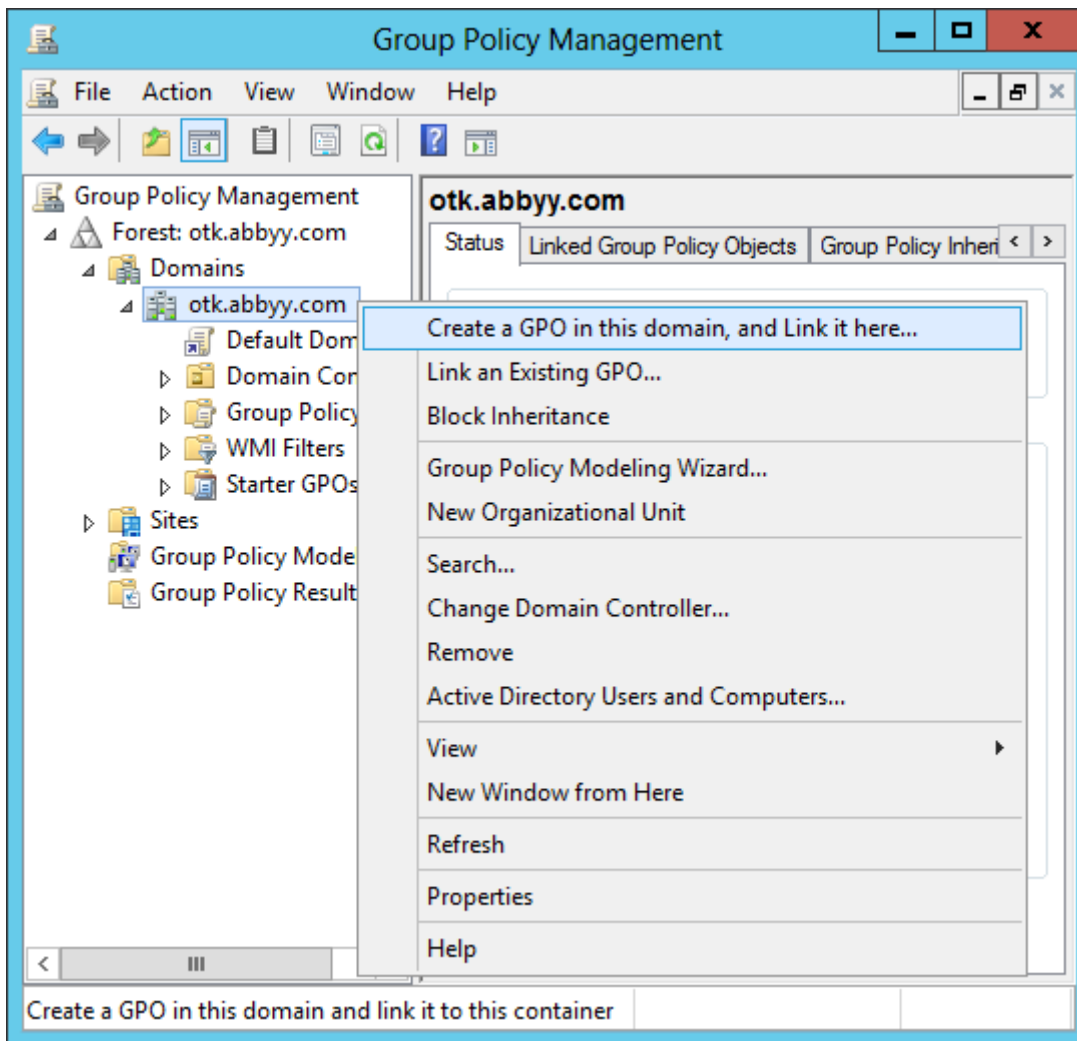
- ABBYY PDF Transformer+ will be completely installed on a workstation only after the workstation is restarted.
- The **Publish to User** and **Assign to User** methods are not supported.
- ABBYY PDF Transformer+ requires Microsoft Core XML Services (MSXML) 6.0 to be installed on the workstation.

## Example: Using Active Directory to deploy ABBYY PDF Transformer+

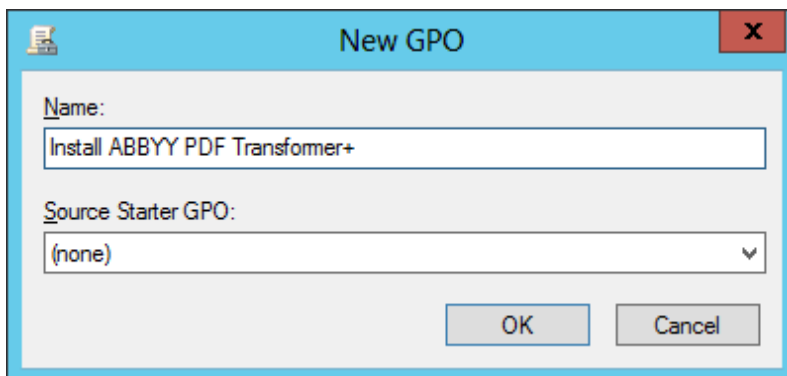
This example illustrates deployment under Microsoft Windows Server 2012.

The program is installed on one domain computer or on a group of computers:

1. Copy the ABBYY PDF Transformer+ distribution package to the server.  
**Note.** The **Domain Computers** accounts must have read permissions for the administrative installation folder.
2. Start **Group Policy Management**.
3. Select the site, domain or any other unit that includes the computer or group of computers on which ABBYY PDF Transformer+ should be installed.
4. From the shortcut menu, select **Create a GPO ... and Link it here...**

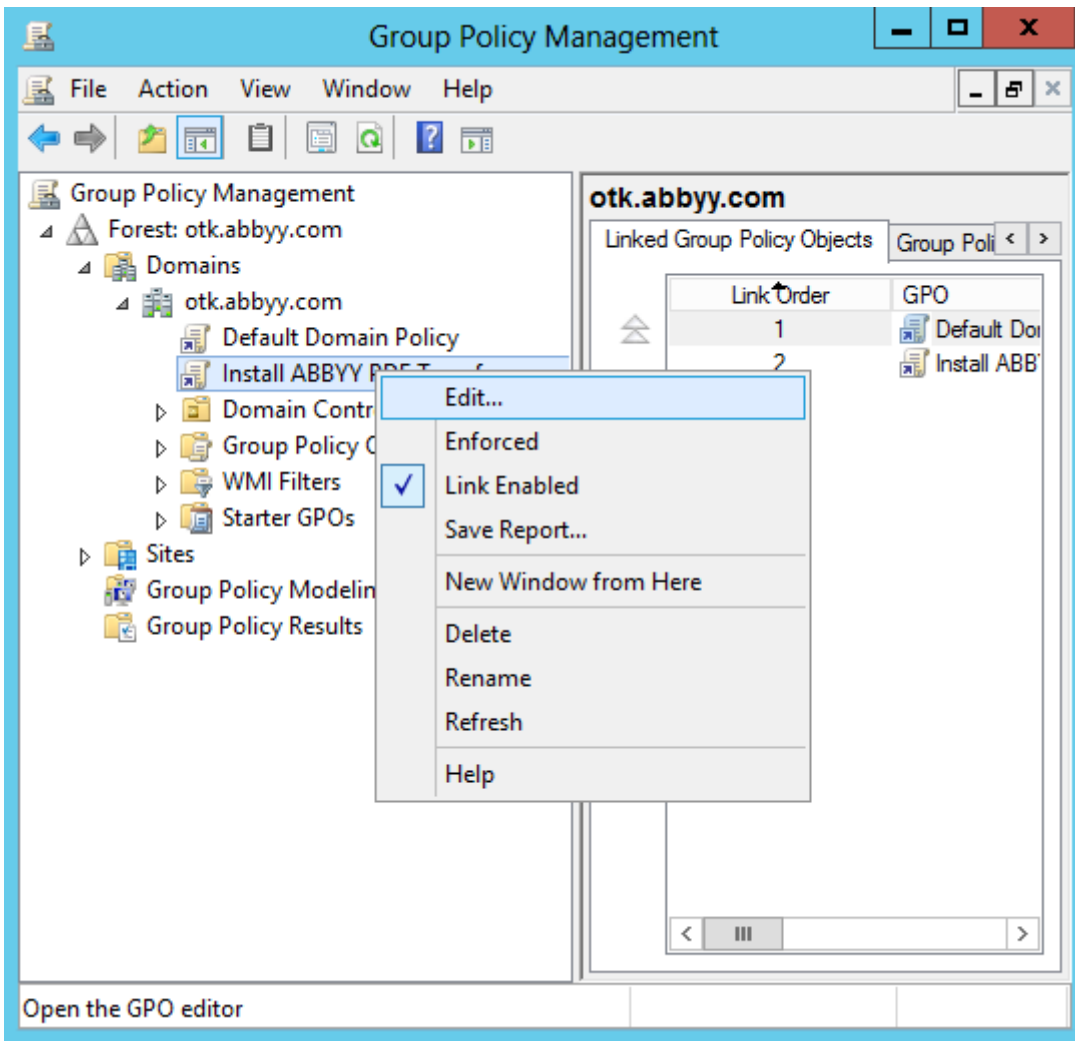


5. Enter a descriptive name and click **OK**.

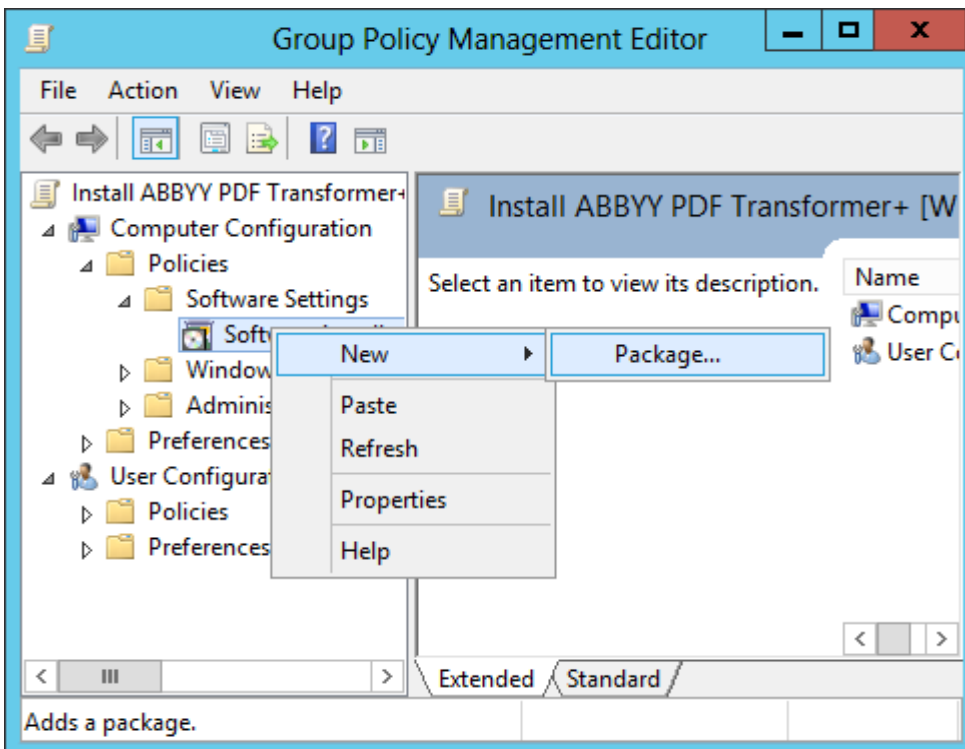


6. Right-click the newly added group policy object and select **Edit...**

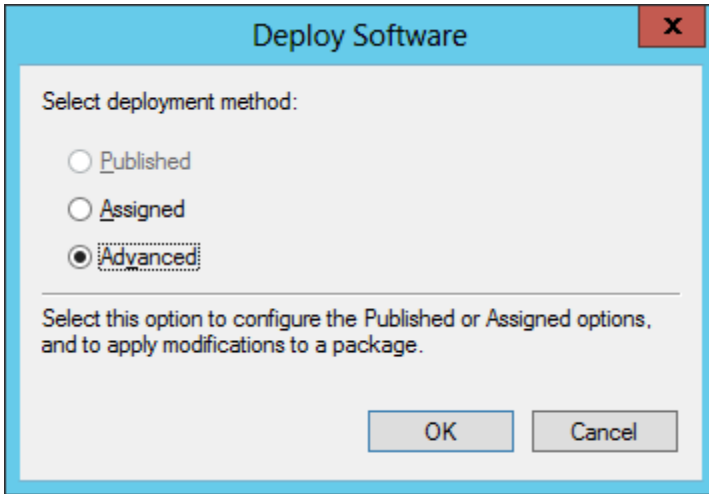




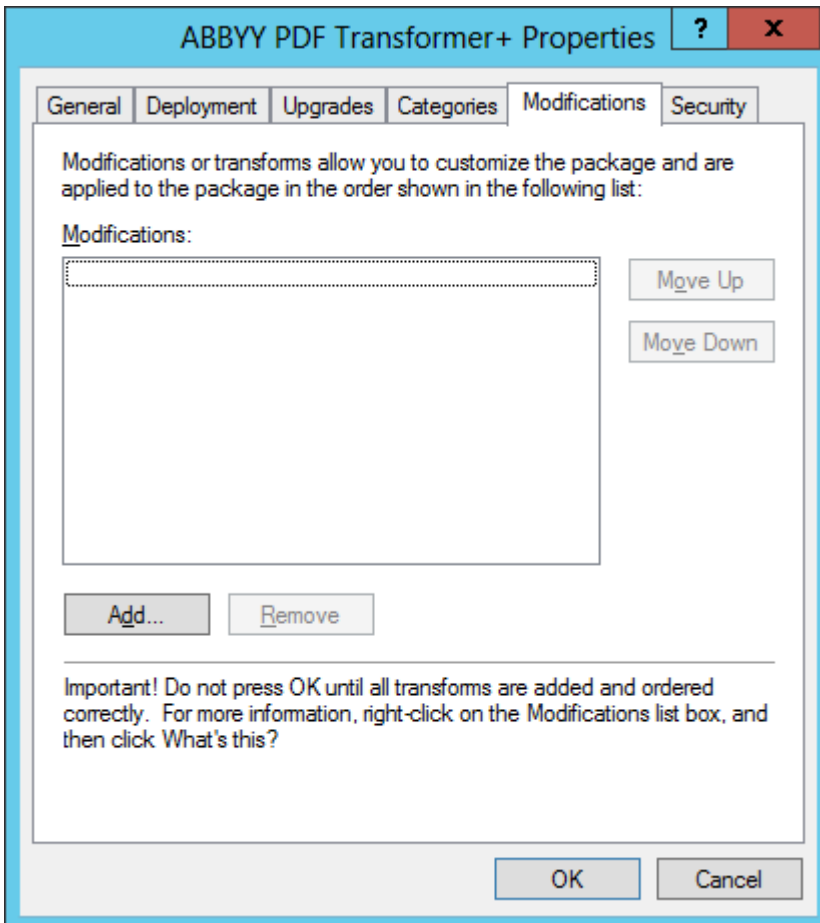
7. In the **Group Policy Management Editor** dialog box, select **Computer Configuration>Policies>Software Settings>Software installation**.
8. Right-click **Software installation** and select **New>Package...**



9. Enter the network path to the **ABBYY PDF Transformer+.msi** file (or to **ABBYY PDF Transformer x64.msi** if you are installing the program on a 64-bit OS).  
This file is located in the ABBYY PDF Transformer+ distribution on the server.
10. Select the **Advanced** deployment method.



11. In the dialog box that opens, click the **Modifications** tab and then click the **Add...** button.



12. Select the interface language that will be used by ABBYY PDF Transformer+ when installed on the workstations. The language files are located in the distribution folder on the server.  
File names and their languages:  
1028.mst Chinese (Traditional)  
1029.mst Czech  
1031.mst German  
1032.mst Greek

- 1033.mst English
- 1034.mst Spanish
- 1036.mst French
- 1038.mst Hungarian
- 1040.mst Italian
- 1042.mst Korean
- 1043.mst Dutch
- 1045.mst Polish
- 1046.mst Portuguese (Brazilian)
- 1049.mst Russian
- 1055.mst Turkish
- 2052.mst Chinese (Simplified)

E.g.: To install ABBYY PDF Transformer+ with the Russian interface, select **1049.mst**.

## Using Microsoft System Center Configuration Manager (SCCM)

Microsoft System Center Configuration Manager (SCCM) automates software installation, allowing administrators to install software on LAN computers, groups or servers without actually visiting the installation sites.

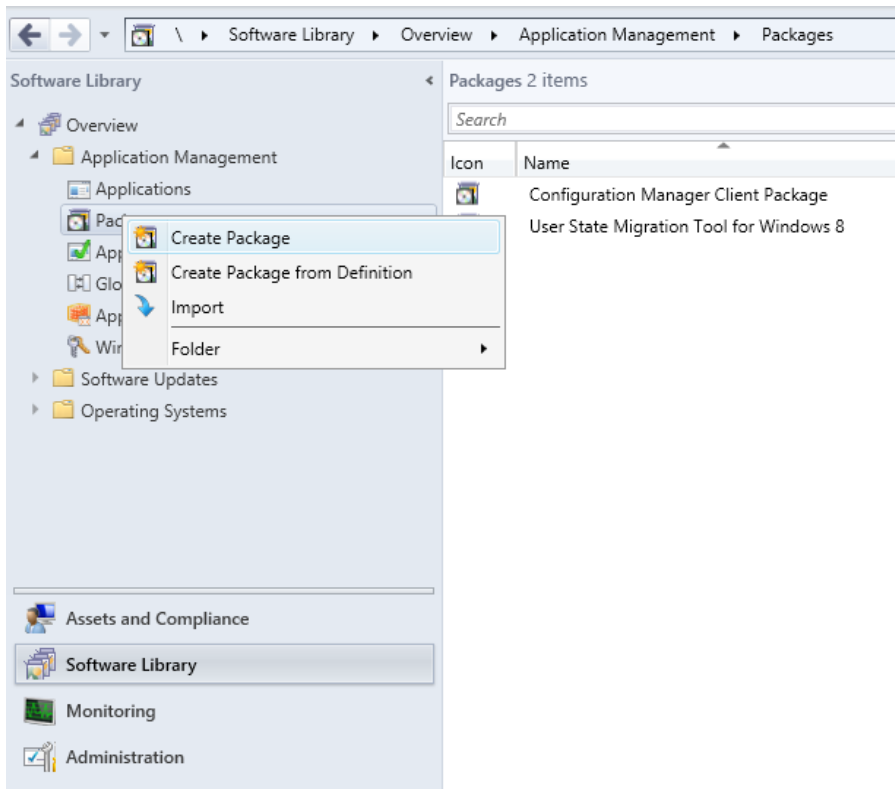
Installing software using SCCM includes the following three stages:

1. Preparing an ABBYY PDF Transformer+ deployment package.
2. Specifying installation parameters:
  - names of computers
  - time of installation
  - conditions for installation, etc.
3. Deployment of the package by SCCM in accordance with the installation parameters.

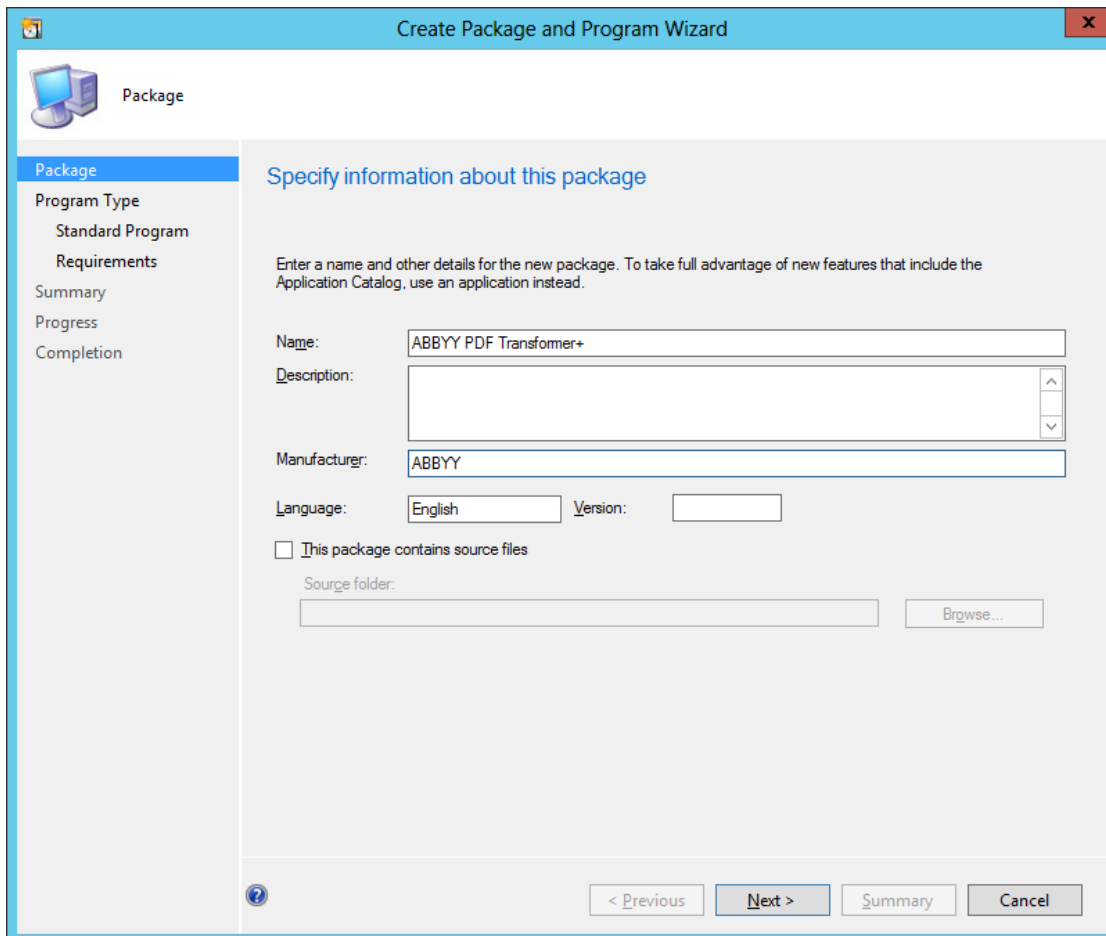
### Example: Using SCCM to deploy ABBYY PDF Transformer+

This example shows how to use SCCM on Microsoft Windows Server 2012.

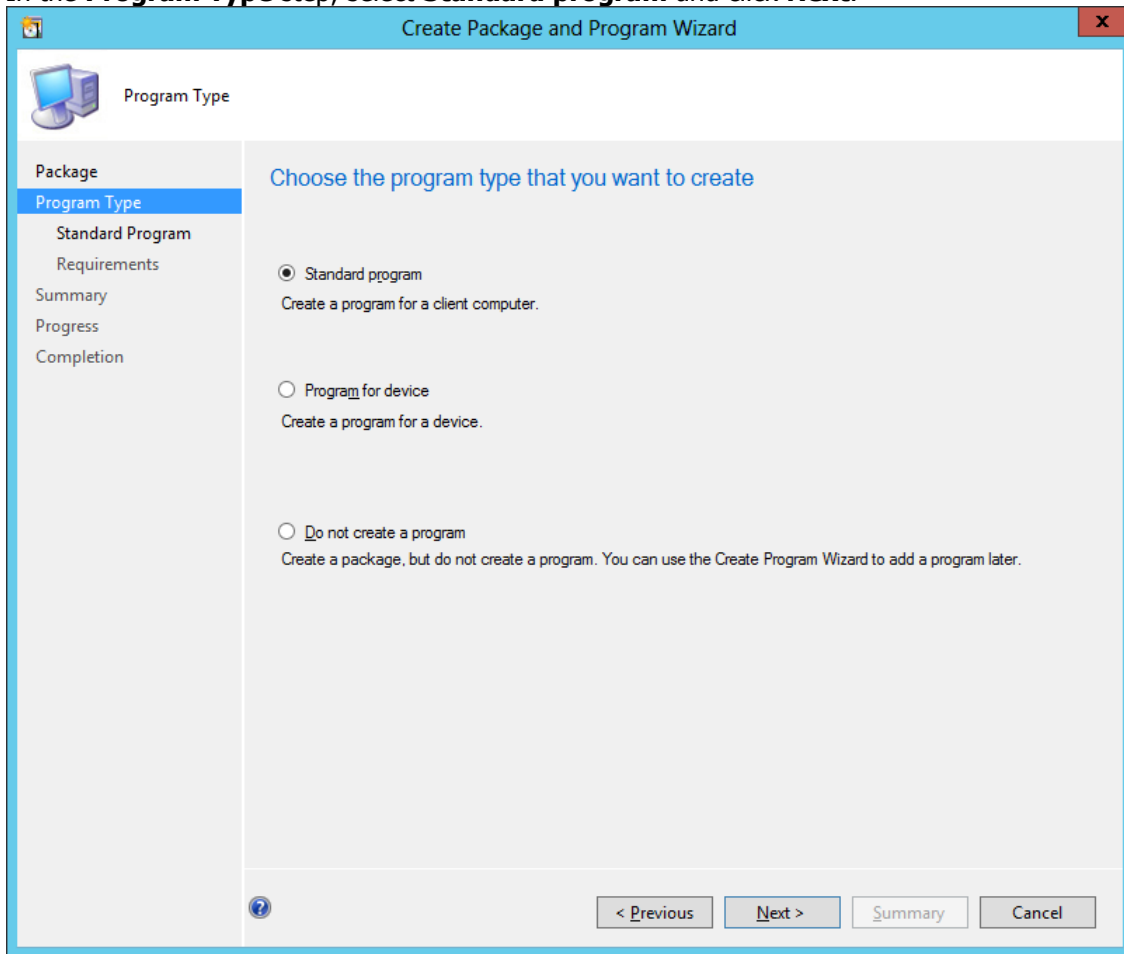
1. Copy the ABBYY PDF Transformer+ distribution package to the server.
2. Start SCCM Administrator Console and select **Software Library**.
3. In the **Application Management** group, select **Packages**.
4. Right-click **Packages** and select **Create Package**.



5. In the **Create Package and Program Wizard** dialog box, describe the package by completing the fields under **Specify information about this package**. Make sure that **This package contains source files** is cleared and click **Next**.

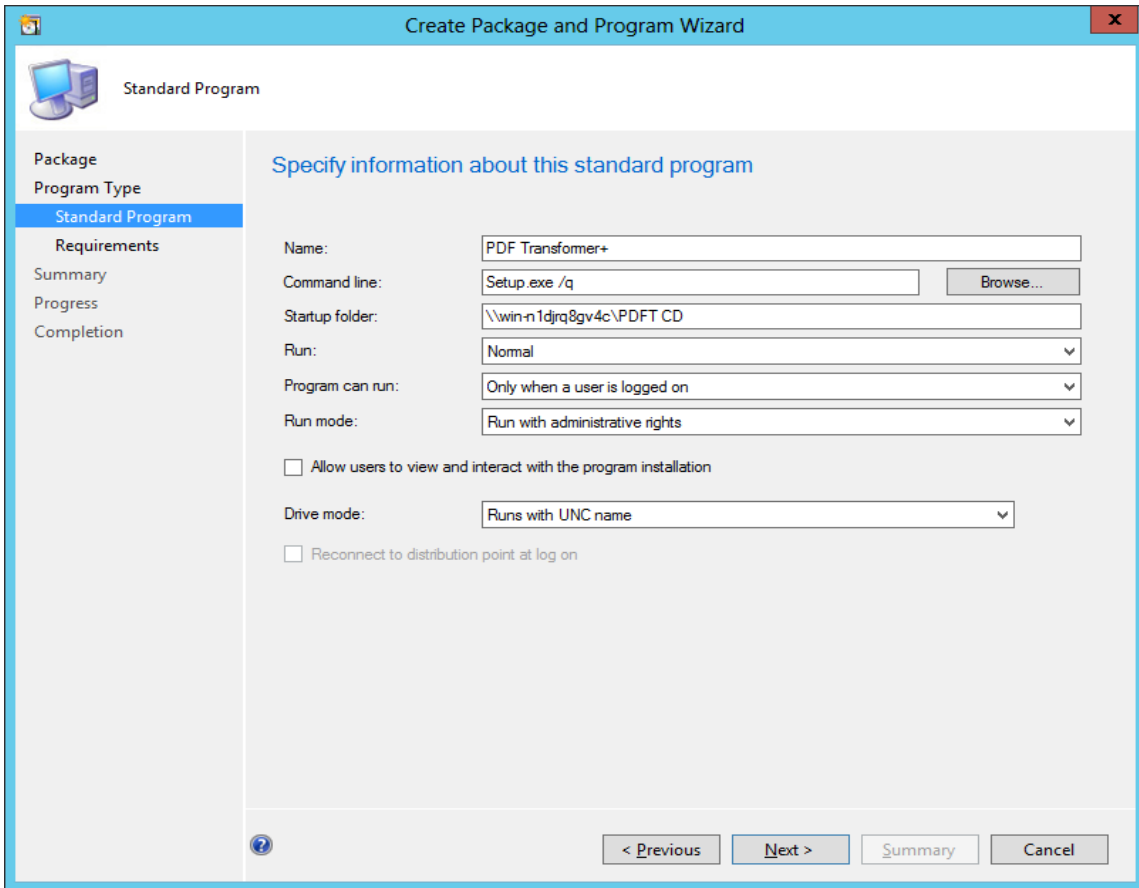


6. In the **Program Type** step, select **Standard program** and click **Next**.

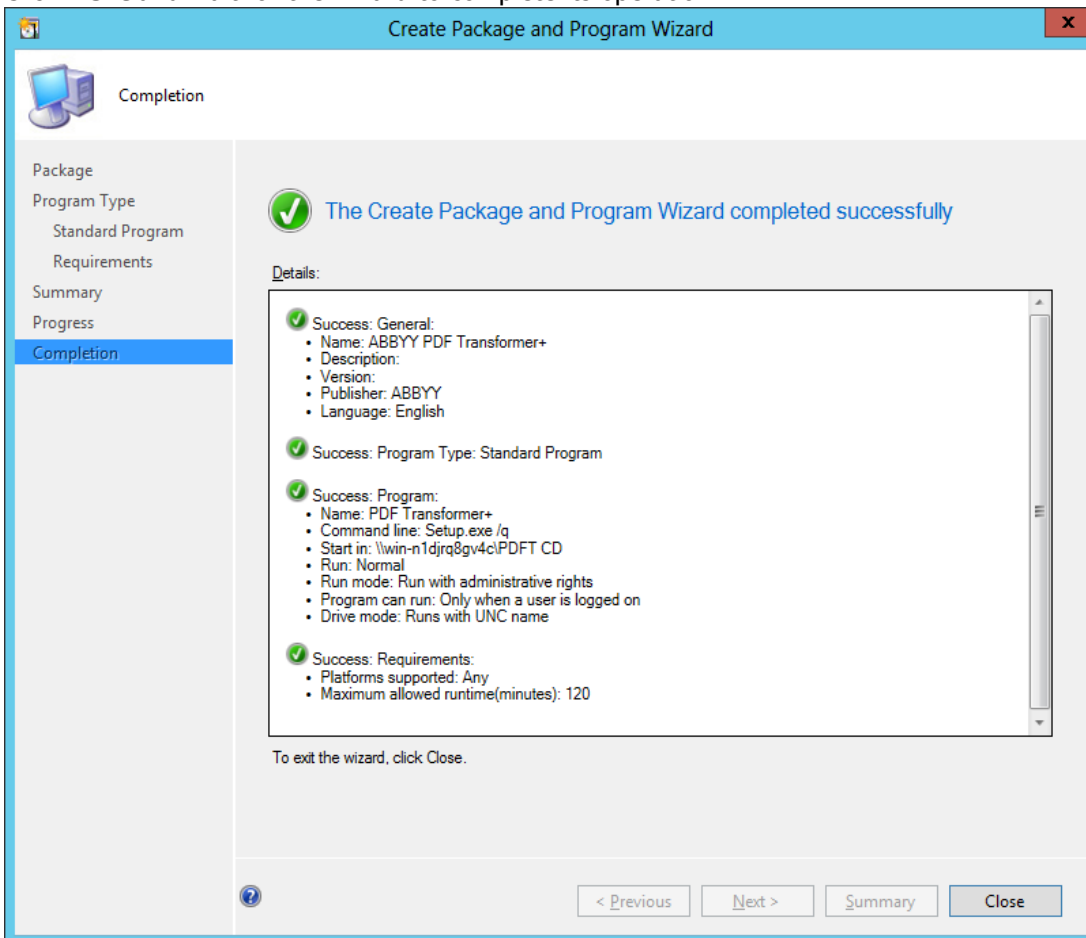


7. In the **Standard Program** step:

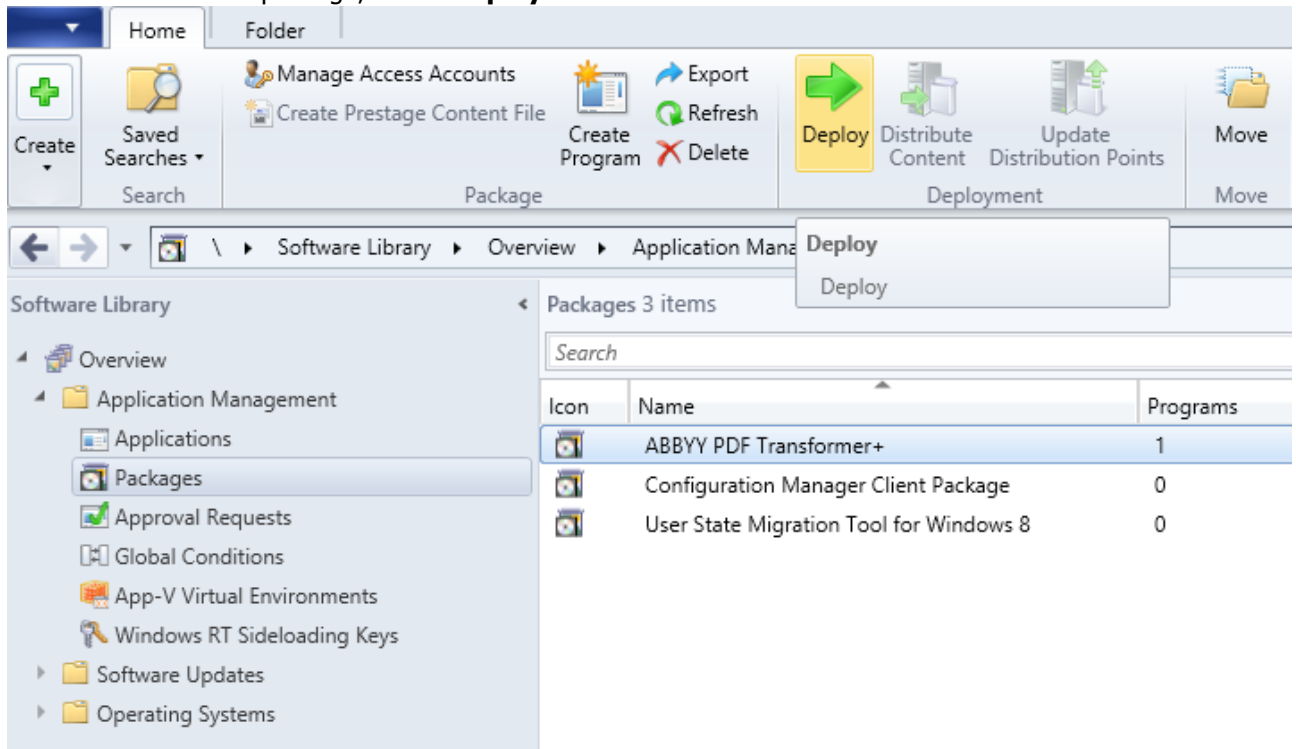
- enter a descriptive name for the program in the **Name** field
- enter **setup.exe /q** in the **Command Line** field
- enter the network path to the **setup.exe** file in the **Start in** field (this file is located in the folder that contains the ABBYY PDF Transformer+ distribution package, e.g. **\\MyFileServer\Program Distribs\ABBYY PDF Transformer+);**
- select **Run with administrative rights** from the **Run mode** drop-down list
- select **Runs with UNC name** from the **Drive mode** drop-down list



8. Click **Next** and wait for the wizard to complete its operation.



9. To install the created package, select **Deploy** and follow the instructions of the wizard.



# Installing ABBYY PDF Transformer+ on a Terminal Server

ABBYY PDF Transformer+ has been tested for compatibility with Citrix XenApp 6.5 and with Windows Server 2008R2 and Windows Remote Desktop Services 7.1. Both solutions can be used with all versions of ABBYY PDF Transformer+. However, to enable multiple users to use ABBYY PDF Transformer+ at the same time, you must use **ABBYY PDF Transformer+ Terminal** licenses.

ABBYY PDF Transformer+ does not support application streaming.

1. Perform administrative installation.  
The License Server and the License Manager can be installed on any computer in the local area network.
2. Launch the License Manager.
3. Add all your licenses in the License Manager.
4. Install ABBYY PDF Transformer+ from the administrative installation folder onto the terminal server.

ABBYY PDF Transformer+ will be installed on the terminal server as if it was a workstation. Now multiple users can remotely access the client part of the application.

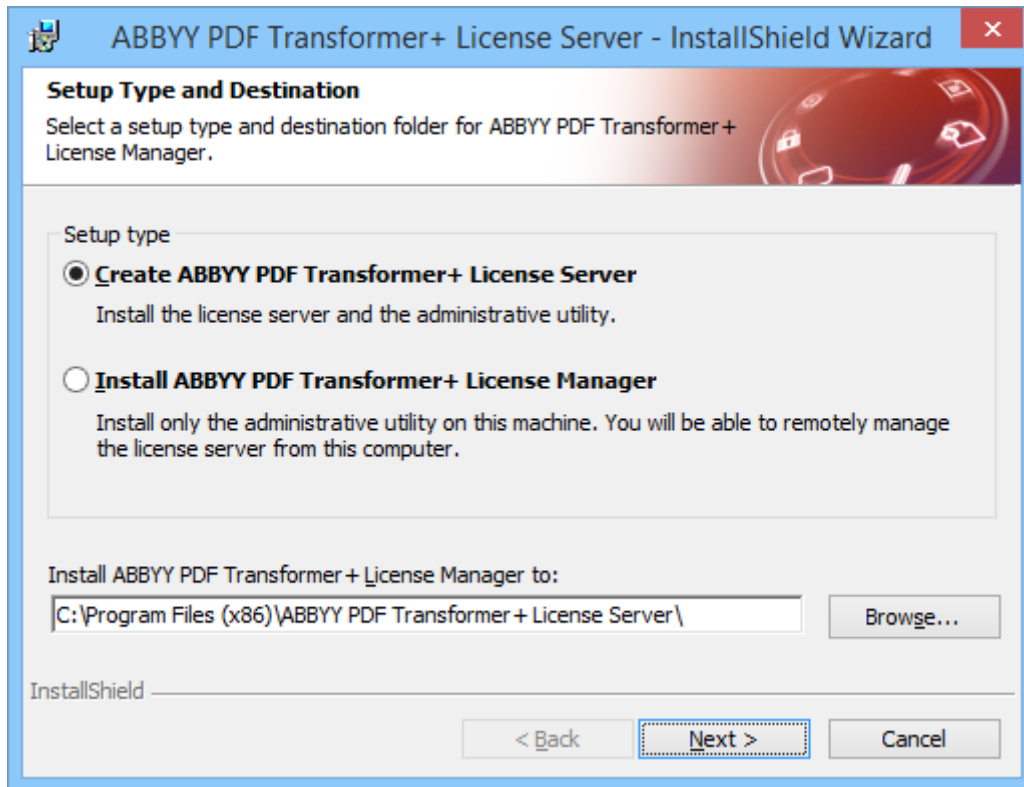
**Note:** The License Server can also be installed on a terminal server.

## Administrative installation

### Installing the License Server and the License Manager

1. Place the setup disk into the CD-ROM drive. The setup program will start automatically.  
**Note:** If the setup program does not start automatically, run the file **License Server\Setup.exe** from the ABBYY PDF Transformer+ CD-ROM.
2. Select **Deploy ABBYY PDF Transformer+ in LAN>Install ABBYY PDF Transformer+ License Server**.
3. Follow the instructions of the setup program.  
During setup, you can:
  - Install ABBYY PDF Transformer+ License Server and ABBYY PDF Transformer+ License Manager.  
The License Server and the License Manager will be installed on the same computer. You can specify a folder into which the License Manager is to be installed.
  - Install only ABBYY PDF Transformer+ License Manager. You will need to specify a folder into which the License Manager is to be installed and specify the name of the computer hosting the License Server.





**Note:**

- If several users will be managing the ABBYY PDF Transformer+ licenses, they must have the **License Manager** utility installed on their computers.
- Each user must be a member of one of the two local groups on the server:
  1. ABBYY Licensing Administrators
  2. BUILTIN\Administrators

You can disable user authorization in the file  
**%commonprogramfiles%\ ABBYY\ PDF**

**Transformer\12.00\Licensing\TS\NetworkLicenseServer.ini**

**(or**

**%commonprogramfiles(x86)%\ ABBYY\ PDF**

**Transformer\12.00\Licensing\TS\NetworkLicenseServer.ini** if you are using a **64-bit system**)

This file is located on the computer where the License Server has been installed. Add the following parameter to this file:

**[Licensing]**

**EnableManagerAuthorization = false**

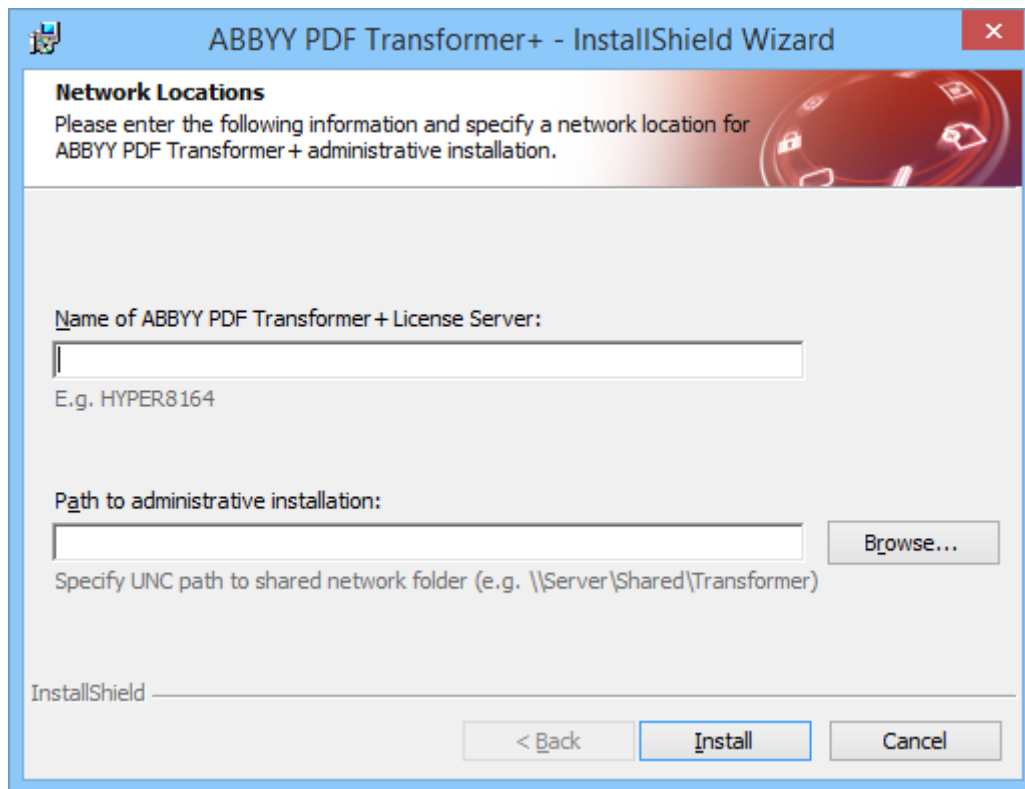
**Important!** For the changes to take effect, you must restart the **ABBYY PDF Transformer+ Licensing Service**.

### Creating an administrative installation point

1. Place the setup disk into the CD-ROM drive. The setup program will start automatically  
**Note:** If the setup program does not start automatically, run the **Setup.exe /a** file from the ABBYY PDF Transformer+ CD-ROM.
2. Select **Deploy ABBYY PDF Transformer+ in LAN > Create administrative installation point**.
3. Follow the instructions of the setup program.

When the setup program prompts you, specify the following:

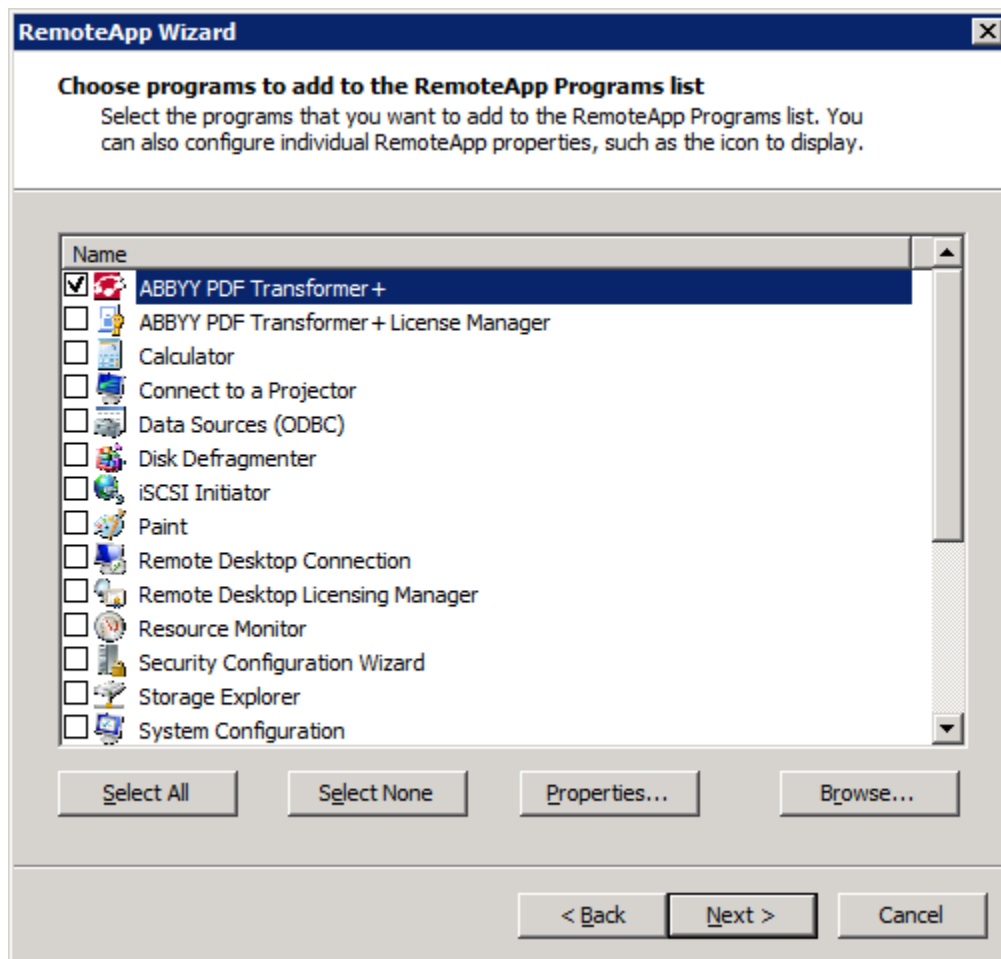
- The name of the computer where the License Server is to be installed
- The path to the administrative installation folder



## Setting Up Windows RemoteApp

Make sure that ABBYY PDF Transformer+ is installed on your server.

1. In Server Manager, select **Roles>Remote Desktop Services>RemoteApp Manager**.
2. Click **Add RemoteApp Programs**.
3. Select **ABBYY PDF Transformer+** in the list of installed applications.



## Setting Up Citrix XenApp

With Citrix XenApp, use "Installed application," "Accessed from a server." ABBYY PDF Transformer+ must be installed on all the servers in your Citrix farm. Additionally, you must create a licensing server running a sufficient number of Terminal licenses. You will need at least as many licenses as the number of users that will be accessing ABBYY PDF Transformer+ at any given time.

To set up Citrix XenApp:

1. Open the Citrix AppCenter (for version 6.5).
2. Select the farm where ABBYY PDF Transformer+ will be running.
3. Select **Action>Publish application**.
4. In the **Name** step, type in the name of the application and a description for the application.

ABBYY PDF Transformer+ - Publish Application

**CITRIX**

**Name**

**Steps**

- ✓ Welcome
- Basic**
- ▶ **Name**
- Type
- Location
- Servers
- Users
- Shortcut presentation
- Publish immediately

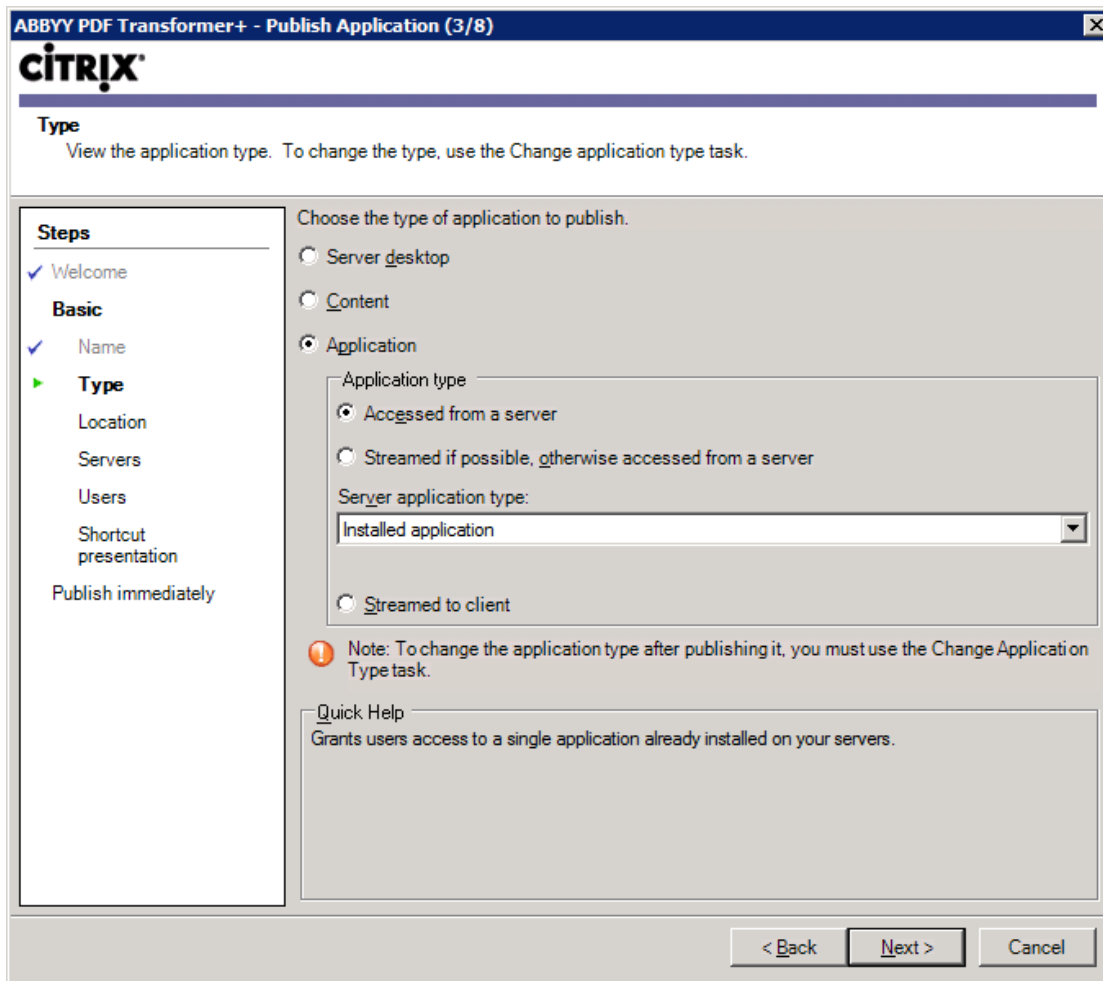
Enter the name and description that you want to be displayed to clients for this application.

Display name:  
ABBYY PDF Transformer+

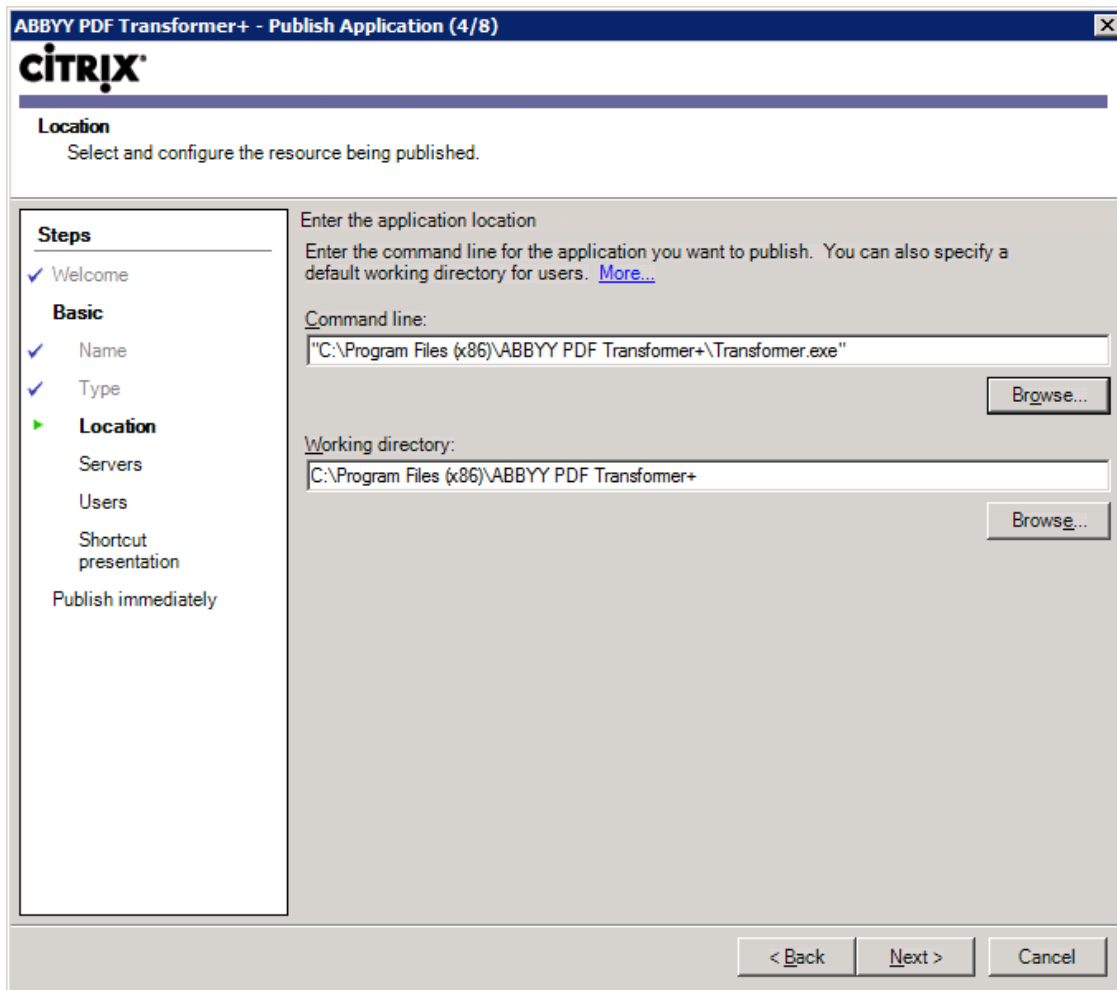
Application description:  
ABBYY PDF Transformer+

< Back   Next >   Cancel

5. In the **Type** step, select **Application**.
6. Under **Application type**, select **Accessed from a server**.
7. From the **Server application type** drop-down list, select **Installed application**.



8. In the **Location** step, specify the path to **Transformer.exe**.



9. Select the servers on which ABBYY PDF Transformer+ will run and the users who will have access to ABBYY PDF Transformer+.
10. In the last step, you can place an icon for the published application on the desktop and in the **Start** menu.

# Activating ABBYY PDF Transformer+

## Why is activation necessary?

ABBYY uses software activation technology to prevent unauthorized use of its software products. The technology restricts the number of copies that can run simultaneously and prevents installation of one and the same copy on an unlimited number of workstations. An unactivated copy of ABBYY PDF Transformer+ will not run or will run in trial mode, depending on your version of the product. In trial mode, certain features may be unavailable, depending on your region and version of the product.

## Activating the product

If ABBYY PDF Transformer+ has not been activated on a given workstation or if its license has expired, when the user attempts to run it, a dialog box is displayed, asking the user to activate a license.

Activation takes just a few minutes. An **Activation Wizard** helps users to send the data required for activation to ABBYY. Once the data are sent, the product is either activated automatically or by entering an **activation code** received from ABBYY (see *Activation Methods* for details).

To activate ABBYY PDF Transformer+:

1. Run ABBYY PDF Transformer+ on the workstation.
2. Click **Activate License...**  
**Note:** If you are running ABBYY PDF Transformer+ in trial mode, select **Help>Activate...**
3. Follow the instructions of the Activation Wizard.  
When activating by phone or by e-mail, you will need to enter the activation code you received from ABBYY or provide the path to the activation file in the corresponding field of the Activation Wizard.

Once the activation process completes, ABBYY PDF Transformer+ can be used on this workstation in full mode.

## Activation methods

**The following activation methods are available:**

- **Over the Internet (fast, recommended)**

Activation is carried out automatically and takes only seconds to complete. An active Internet connection is required for this method.

- **By e-mail (fast)**

The Activation Wizard will create an activation e-mail message. Send this message to ABBYY without altering its subject or body. You will receive a file in reply. Save this file to your hard disk. In the Activation Wizard, click **Next>**, then click **Browse...** and provide the path to the file.

- **On the website (fast)**

The Activation Wizard will display the URL address where you can activate your copy, the serial number of your copy, and your Product ID. Go to the specified URL and paste your serial number and Product ID into the corresponding fields on the page. A file will be generated.

Download this file to your computer. In the Activation Wizard, click **Next>**, then click **Browse...** and provide the path to the file.

- **By e-mail from another computer (slow)**

The Activation Wizard will display the text of an activation e-mail message and the e-mail address to which the message should be sent. On another computer, create an e-mail message, copy the text from the Activation Wizard into this message, and send the message to the address indicated in the Activation Wizard. You will receive a file in reply. Copy this file onto the computer on which ABBYY PDF Transformer+ is to be activated. In the Activation Wizard, click **Next>**, then click **Browse...** and provide the path to the file.

**Important!** Do not alter the text of the activation message generated by the Activation Wizard. Make sure the message has no attachments and no automatic signature is inserted at the end of the message.

- **By phone (slow)**

**Important!** This activation method is not available for some types of distribution packages.

In the Activation Wizard, select your country. The wizard will show the phone numbers of your nearest ABBYY office or partner. Dial one of the numbers and communicate to the operator your serial number and Product ID (both will be displayed in the Activation Wizard). The operator will read an activation to you. In the Activation Wizard, click **Next>** and enter the activation code.

**Note:** An activation code has 78 digits and will take some time to dictate.

## Automatic activation

Some versions of the product automatically activate themselves over the Internet without asking the user for confirmation. This type of activation requires an active Internet connection. If automatic activation fails for some reason, you can either try activating the product once again or select a different activation method.

## Renewing a license

If you have a time-limited license, you will not be able to use ABBYY PDF Transformer+ when the license expires. To continue using the product, you will need to run the Activation Wizard and activate a new serial number (see *Activating the product* for details).



## Frequently Asked Questions

### Can I clone an operating system with pre-installed ABBYY PDF Transformer+?

To deploy ABBYY PDF Transformer+, you can clone your Microsoft Windows XP/Vista/7/8 operating system. After cloning your OS, you will need to activate ABBYY PDF Transformer+. An unactivated copy of ABBYY PDF Transformer+ will not run or will run in trial mode, depending on your version of the product. Some versions of the product automatically activate themselves over the Internet without asking the user for confirmation. See *Activating ABBYY PDF Transformer+* for details.

#### **Important!**

1. Cloning is only possible if you have not yet run ABBYY PDF Transformer+ on the cloned computer. Otherwise, you will need to repair ABBYY PDF Transformer+ on that computer. See *How can I repair ABBYY PDF Transformer+ on workstations?*
2. Once you have cloned your OS, you need to change its name and **Security Identifier (SID)**.
3. Trial versions of ABBYY PDF Transformer+ cannot be cloned.

### How can I repair ABBYY PDF Transformer+ on workstations?

#### Repairing ABBYY PDF Transformer+ in interactive mode

On the workstation, do the following:

1. In **Start>Control Panel**, select **Programs and Features**.  
**Note:** In Microsoft Windows XP, this command is called **Add and Remove Programs**.
2. In the list of installed programs, select **ABBYY PDF Transformer+** and click **Change**.
3. In the **Program Maintenance** dialog box that opens, select **Repair** and click **Next**.
4. Follow the instructions of the wizard.

### How can I delete an expired license from a workstation?

1. Run ABBYY PDF Transformer+.
2. Select **Help>About...** and click **License Info**.
3. Select the license you wish to delete and click **Delete**.

**Note:** If you cannot start ABBYY PDF Transformer+ via **Start>Programs**, start **Transformer.exe** from the command line adding the **-license** command.

### How can I change the network connection settings?

You can change the connection settings used for communication among the License Server, the License Manager, and the workstations.

#### Setting up a network connection

1. To set up a network connection, use the following file  
**%programfiles%\Common Files\ABBYY\PDFTransformer\12.00\Licensing\TS\Licensing.ini**  
This file is located on the computer where the License Server is installed.
2. In the above file, change the desired parameters:
  - Connection protocol

- Connection port

E.g.:

**[Licensing]**

ConnectionProtocolType=TCP\IP

ConnectionEndpointName=81

**Note:** Make sure that your firewall does not prevent **%programfiles%\Common Files\ABBYY\PDFTransformer\12.00\Licensing\TS\NetworkLicenseServer.exe** from accessing the specified port.

3. Copy the file **Licensing.ini**

- in the License Manager folder on all the computers where the License Manager has been installed (by default, the License Manager is installed into **%programfiles%\ABBYY PDF Transformer+ License Manager**)
- in the administrative installation folder where Transformer.exe is located, E.g. **\\MyFileServer\Distribs\ABBYY PDF Transformer+**.

**Important!** For the changes to take effect, you must restart the ABBYY PDF Transformer+ Licensing Service.

4. Install ABBYY PDF Transformer+ on a terminal server.

## Setting up the connection protocol

**[Licensing]**

**ConnectionProtocolType=[TCP\IP | NAMED PIPES]**

This parameter allows you to specify the protocol to be used (TCP\IP) or Named Pipes. This information will be used:

- by the License Manager to access the License Server
- by the workstations to access the License Server when installing or repairing ABBYY PDF Transformer+

By default, **Named Pipes** is used.

## Setting up the connection port

**[Licensing]**

**ConnectionEndpointName=[port number for TCP\IP | channel name for Named Pipes]**

This parameter allows you to specify the number of the port for the connection protocol or the name of the channel for Named Pipes. This information is used:

- by the License Manager to access the License Server
- by the workstations to access the License Server when installing or repairing ABBYY PDF Transformer+

**Note:** Avoid changing the name of the named channel for the Named Pipes protocol that is set by the program when installing the License Server.

## How can I rename the computer hosting the License Server or move the License Server to another computer?

If you deployed ABBYY PDF Transformer+ in the local area network and then changed the name of the computer hosting the License Server or an unexpected error occurred on the License Server computer, do the following:

1. Remove the License Server from the computer on which it was installed.

**Note:** If this computer is inaccessible, go to step 2.

- a. In **Start>Control Panel**, select **Programs and Features**.  
**Note:** In Microsoft Windows XP, this command is called **Add and Remove Programs**.
- b. In the list of installed programs, select **ABBYY PDF Transformer+ License Server** and click **Remove**.
2. Install the License Server on a different computer, for example on \\NewServer.
3. On all the computers where the License Manager is installed, either edit or add the parameter **[Licensing]**  
NetworkServerName=<COMPUTER NAME> in the file  
%Program Files%\ABBYY PDF Transformer+ License Manager\LicenseManager.ini  
This parameter allows you to specify the name of the server to be accessed by the License Manager.  
For example, specify  
**[Licensing]**  
**NetworkServerName=MyComputerName**  
**Important!** For the changes to take effect, you must restart ABBYY PDF Transformer+ License Manager.
4. Add and activate your licenses in ABBYY PDF Transformer+ License Manager. For details, see the ABBYY PDF Transformer+ License Manager help file.
5. In the administrative installation point, go to the ABBYY PDF Transformer+ folder and create a **Licensing.ini** file there.  
The path to the administrative installation folder was specified earlier when creating the administrative installation point.
6. In the **Licensing.ini** file you have created, add the **NetworkServerName** parameter to the **[Licensing]** section. This parameter specifies the name of the server, for example  
**[Licensing]**  
**NetworkServerName=MyComputerName**
7. Reinstall ABBYY PDF Transformer+.

# Technical Support

If you have any questions about how to install and use ABBYY PDF Transformer+ to which you cannot find answers in this System Administrator's Guide, please contact the ABBYY technical support service or ABBYY partners. For contact information, please refer to the "Support" section at **[www.abbyy.com](http://www.abbyy.com)**.